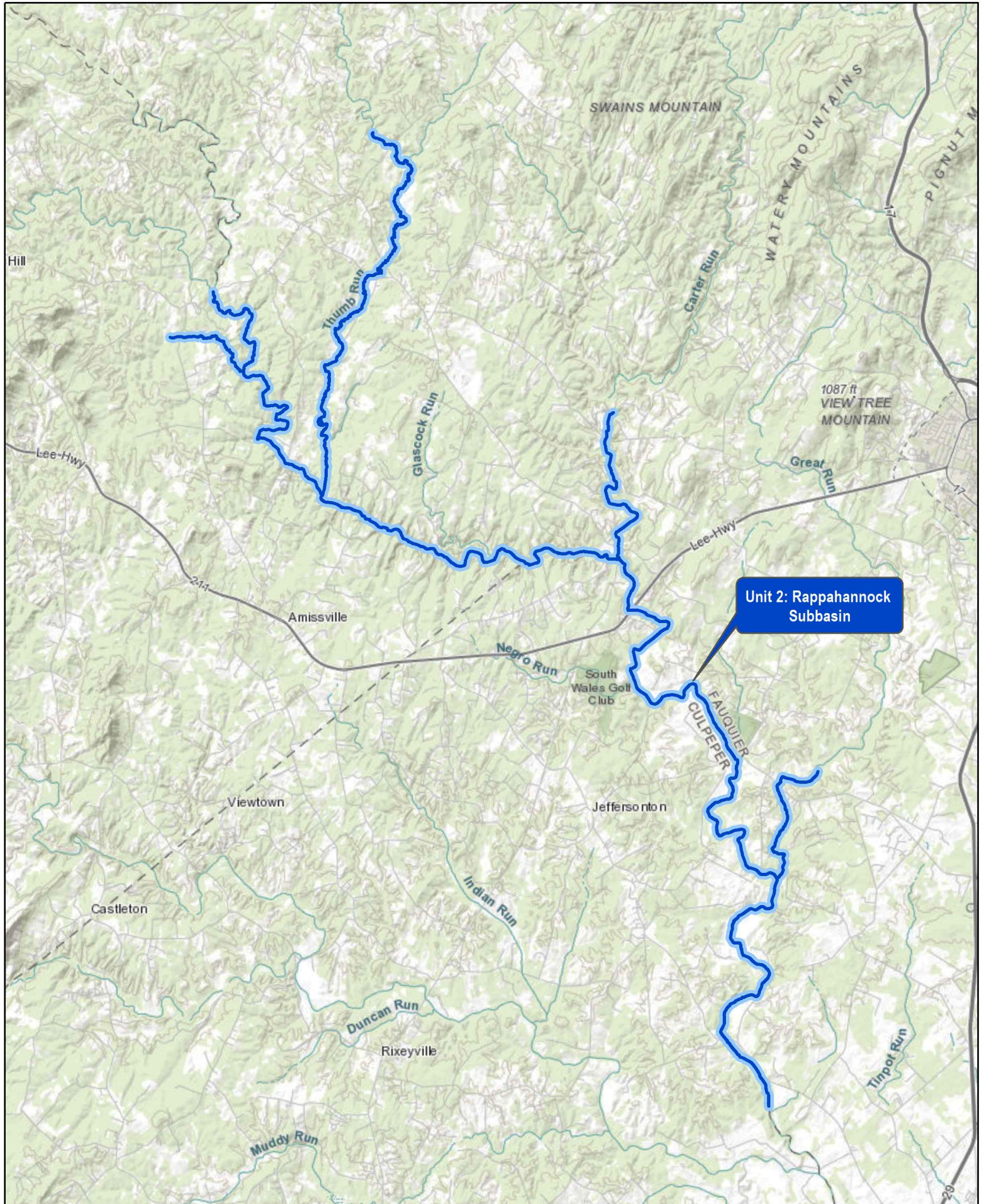


Unit 2: Rappahannock Subbasin Critical Habitat Unit for Yellow Lance

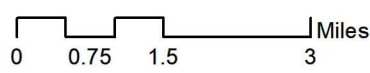
Fauquier Co. Virginia



Unit 2: Rappahannock Subbasin



Source: Federal Register / Vol 85, No. 25 / Thursday, February 6, 2020 / Proposed Rules 6874
Base: World Topographic Map. ESRI.



Wetland Studies and Solutions, Inc.

a DAVEY company