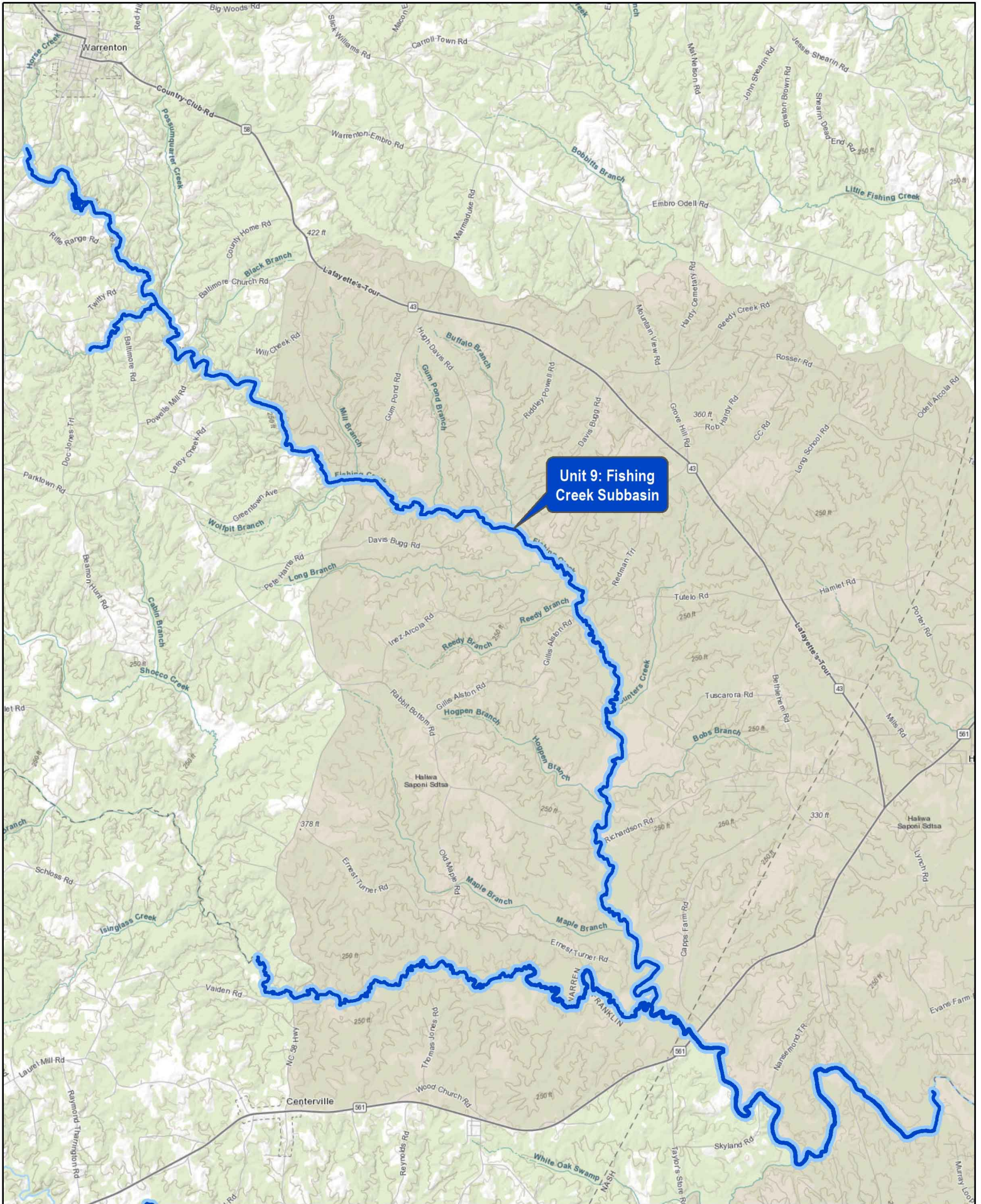


Unit 9: Fishing Creek Critical Habitat Unit for Yellow Lance

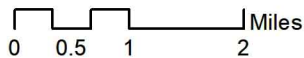
Warren Co. North Carolina



Unit 9: Fishing
Creek Subbasin



Source: Federal Register / Vol 85, No. 25 / Thursday,
February 6, 2020 / Proposed Rules 6881
Base: World Topographic Map. ESRI.



Wetland Studies and Solutions, Inc.

a DAVEY company